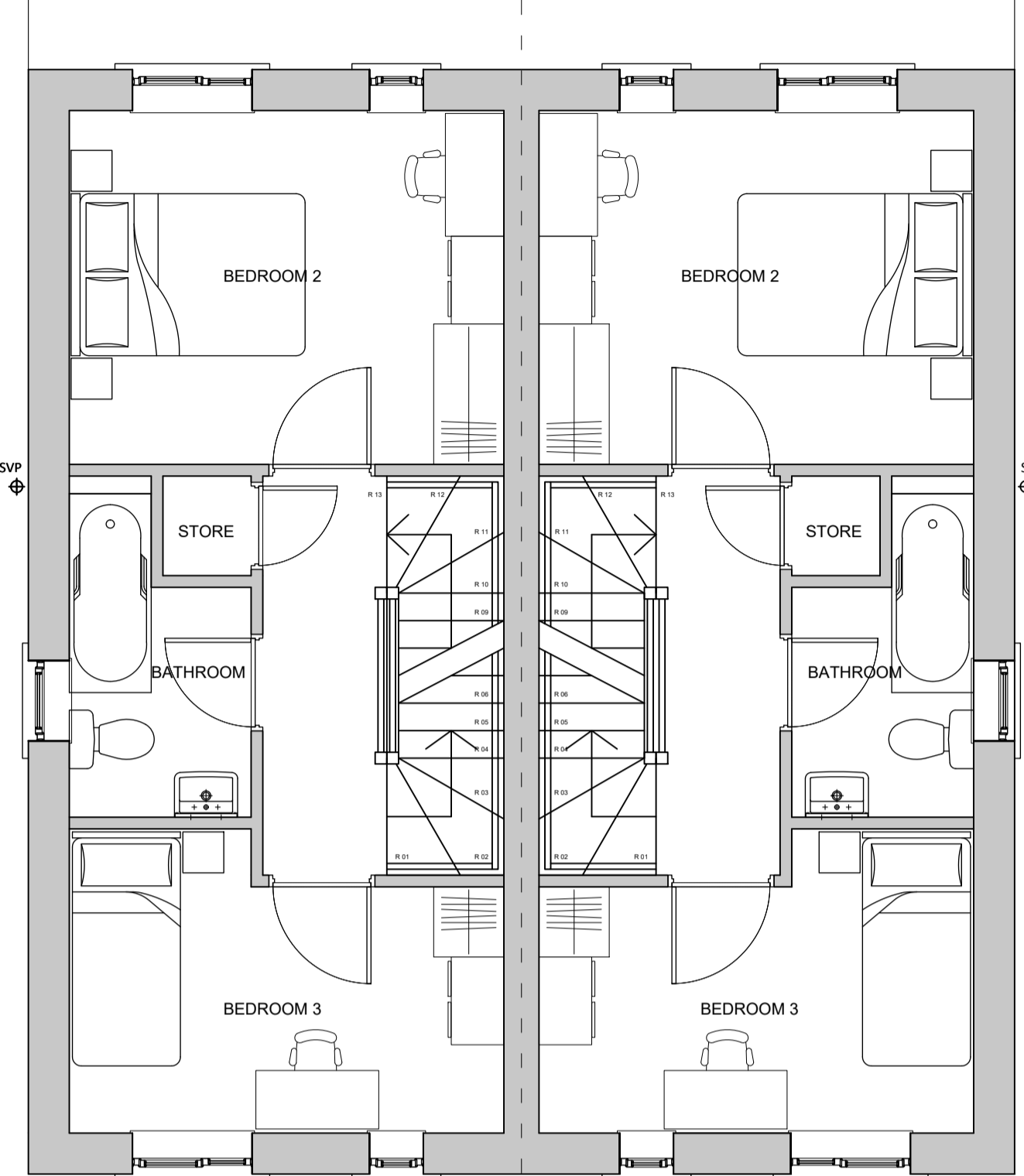
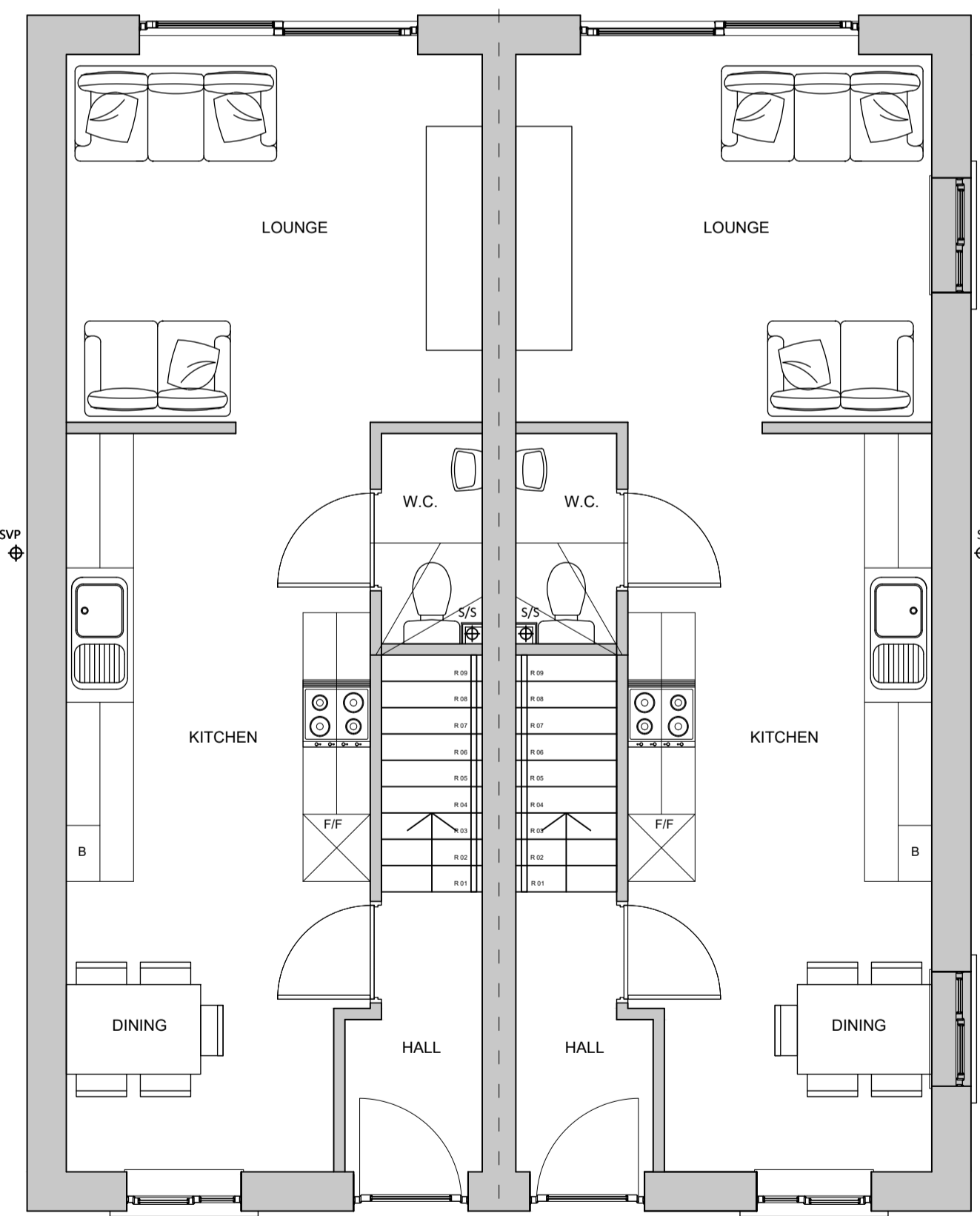
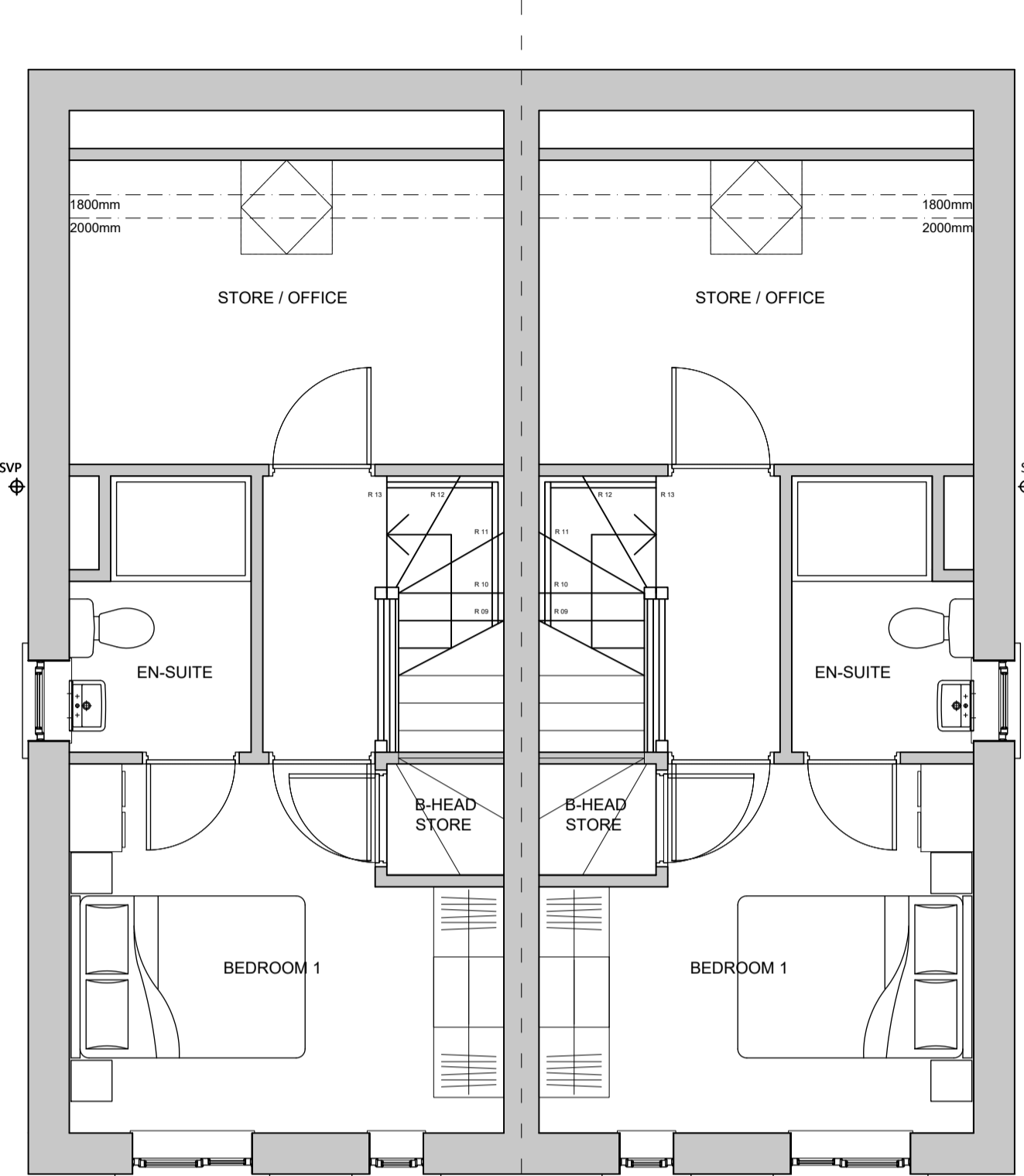


First Floor Plan



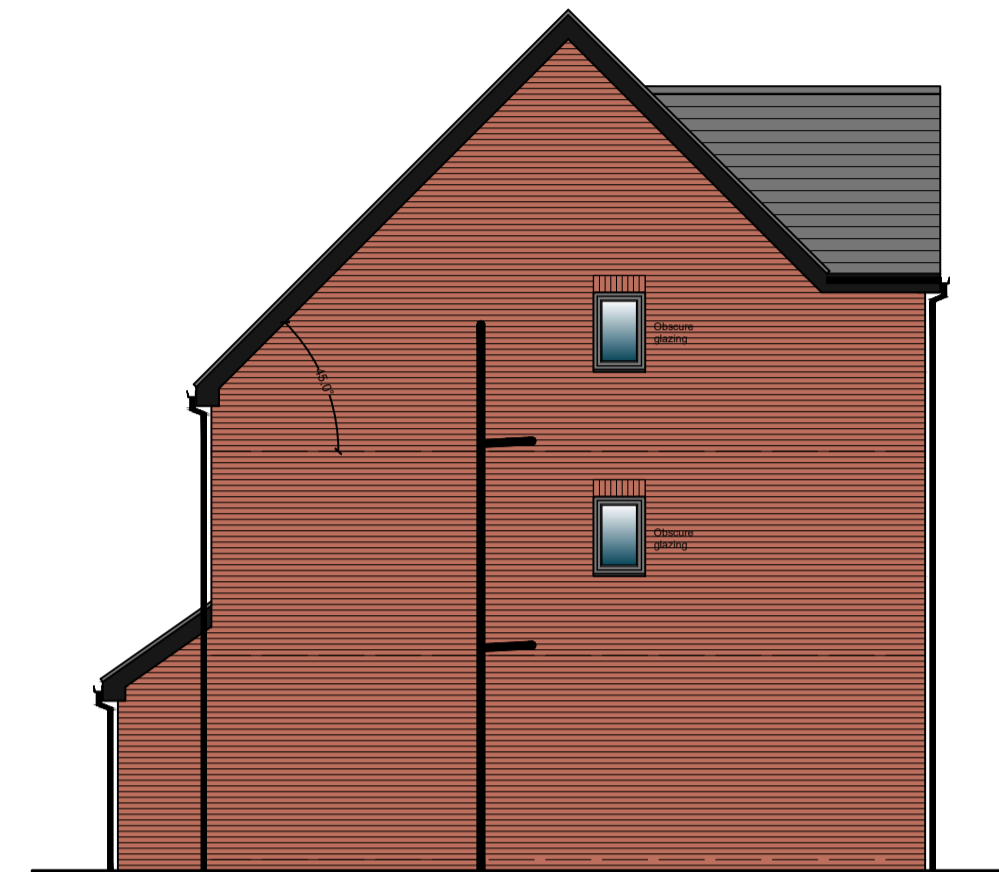
Second Floor Plan



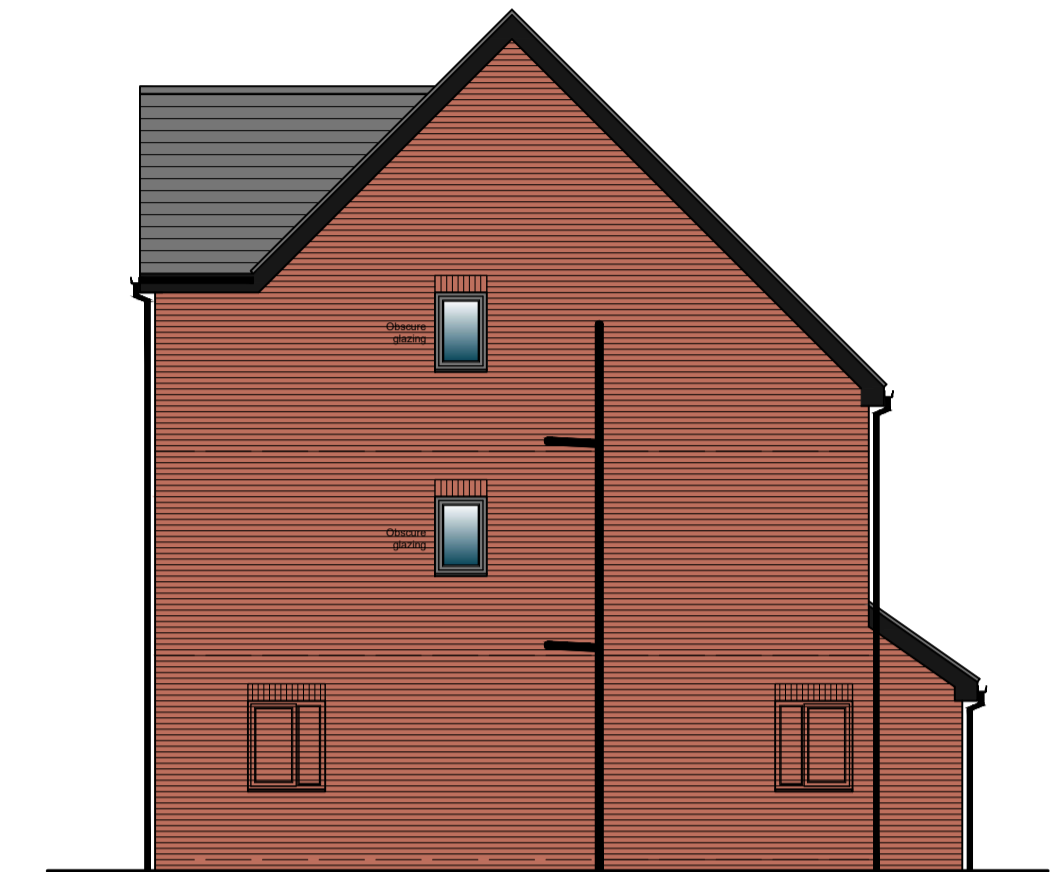
Ground Floor Plan



Front Elevation



Gable Elevations
Scale 1:100



Window to plots 25 and 32 only

Window to plots 25 and 32 only

Materials Legend

- ① Roof Tiles TBC
- ② Red multi facing brickwork TBC
- ③ UPVC window frames. Colour Anthracite
- ④ UPVC rainwater goods. Colour Black
- ⑤ UPVC fascias and soffits. Colour Black

NB All materials/colours to be approved by LA

Obscure glazing to all bathroom / WC windows and gable windows where required for privacy



Rear Elevation



Front Elevation Plots 5-6, 9-10
Scale 1:100

nicol thomas

Revision	Date	Details
A	May 22	Amendments to suit comments from Wiggett's sales team.
B	May 22	Amendments to suit comments from Wiggett's sales team.
C	June 22	Canopy removed at request of Wiggett's. Windows added to gable of plots 25 and 32 for natural surveillance.

nicol thomas
architects project managers construction cost consultants CDM co-ordinators
Registered in England and Wales. Reg No. 2140639
Quality Assured to BS EN ISO 9001:1994 Certificate Number GB 4723
Heyside House Blackshaw Lane Heyside Royton Oldham OL2 6NS
t:01706 290088 f:01706 290099 e:oldham@nicolthomas.com
Also at Birmingham (Registered office)
Do not scale from this drawing. All dimensions must be checked and verified before preparing production drawings or commencing works. This drawing and its design is the copyright of Nicol Thomas Ltd and may not be reproduced in any form whatsoever without their prior express written consent

Client:	Wiggett Construction		
Job:	Fern Lodge Drive, Ashton-Under-Lyne		
Drawing title:	House Type B		
Drawing Number: (Job number)	M4852	(PL)	04
Scale:	1:50 @ A1		
Date:	May 2022		
Drawn by/ checked by:	RW		
Revision:	C		